

Quick Start Guide

The mobile phone is in compliance with the requirement of EN 60950-1: 2006 amendment A12: 2011. There will appear a warning box when the volume level is over 3. If the user selects left soft key in the warning box, the volume can be increased and the phone will repeat the acknowledgement more than once every 20h of cumulative listening time.

SAR

This product meets applicable national SAR limits of 2.0 W/kg. The specific maximum SAR values can be found on page 24 of this user guide.

When carrying the product or using it while worn on your body, either use an approved accessory such as a holster or otherwise maintain a distance of 10 mm from the body to ensure compliance with RF exposure requirements. Note that the product may be transmitting even if you are not making a phone call.

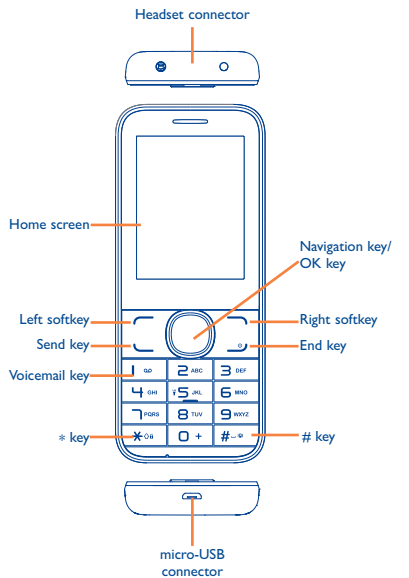
PROTECT YOUR HEARING

To prevent possible hearing damage, do not listen at high volume levels for long periods. Exercise caution when holding your device near your ear while the loudspeaker is in use.

ALCATEL
onetouch.

Your mobile

1.1 Keys and connectors



- Press to go left/right/up/down
- Press to confirm an option
- Left softkey
 - Unlock keypad
 - Access main menu
- Send key
 - Pick up/Send a call
 - Press: Enter Call log
- Right softkey
 - Access contacts
 - Press: End a call
 - Press and hold: Return to the Home screen
 - Press and hold: Power on/off
 - Press and hold: Access your voicemail
- From home screen
 - Press: 0
 - Press and hold: "+/P/W"
- In Edit mode
 - Press: space
 - Press and hold: 0
- From Idle screen
 - Press: *
- In Edit mode:
 - Press: Access symbols table
 - Press and hold: Change input methods
- From Idle screen
 - Press: #
 - Press and hold: Activate/deactivate the Meeting mode
- In Edit mode
 - Press: Change input methods

1.2 Status bar icons ⁽¹⁾

- Battery charge level.**
- Vibrate alert:** your phone vibrates, but does not ring or beep with the exception of the alarm.
- Bluetooth status** (Activated).
- Bluetooth status** (Connected to an audio device).
- Headset connected.**
- Keypad locked.**
- Call forwarding activated:** your calls are forwarded.
- Alarm or appointments programmed.**
- Level of network reception.**
- Voicemail message arrived.**
- Missed calls.**
- Roaming.**

⁽¹⁾ The icons and illustrations in this guide are provided for informational purposes only.

- GPRS connection status** (Activated).
- GPRS connecting.**
- Music activated.**
- MMS receipt in progress.**
- Sending an MMS.**
- Silence mode:** your phone does not ring, beep or vibrate with the exception of the alarm.
- SMS unread.**
- MMS unread.**
- (Flickering) Message list is full:** your phone cannot accept any new messages. You must access the message list and delete at least one message on your SIM card.

⁽¹⁾ You need to download the application to your phone for the first time. May cause additional network charges for data flow to download this application.

1.3 Home screen

1.3.1 Widget bar

Widgets are convenient shortcuts for quick access from the Home screen.

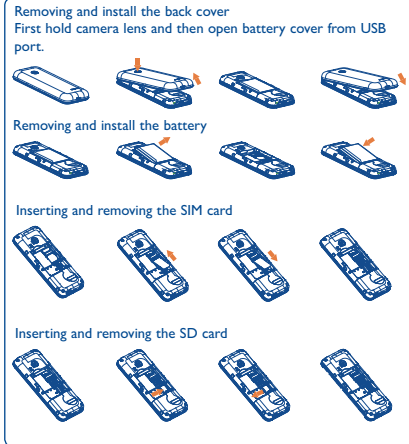
You can customize widget bar by **"Settings/Phone settings/Widget bar"**.

1.3.2 Change wallpaper

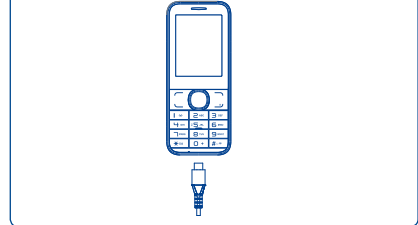
You can select a folder to choose one image as favourite wallpaper by selecting **"Options/Use as/Wallpaper"**.

2 Getting started.....

2.1 Set-up



Charging the battery



Connect the battery charger to your phone and mains socket respectively.

To reduce power consumption and energy waste, when battery is fully charged, disconnect your charger from the plug; switch off Bluetooth or background-running applications when not in use; reduce the backlight time, etc.

2.2 Power on your phone

Hold down the key until the telephone powers on.

2.3 Power off your phone

Hold down the key from the Home screen.

3 Making a call

Dial the desired number then press the send key to place the call. The number you entered can be saved to **Contacts** by selecting **"Options/Save to contacts"**. If you make a mistake, you may press Right softkey to delete the incorrect digits. To hang up the call, press the key.

4 Messages.....

4.1 Access

You may access this menu using the following options:

- Access from the main menu by selecting **"Messages"**.
- Select from widget bar, and then enter the sub-menu you require.

4.2 Write message

You can select **"Messages/Create SMS"** from the main menu or access from widget to write text/multimedia message. One or more recipients can be added from contact list. Press **"Contacts"** through key to multi-select recipients from Contacts.

An SMS will be converted to MMS automatically when images, videos, audio, slides or attachments are inserted; or the message contains more than 8 pages of text.

An SMS message of more than a certain number of characters (the number of characters depends on your language) will be charged as several SMS. An MMS message containing photos and/or sounds may also be billed as more than one message. Specific letters (accent) will increase the size of the SMS, this may cause multiple SMS to be sent to your recipient.

5 Contacts.....

5.1 Consulting your contacts

You can access to this function by selecting **"Contacts"** from the main menu.

5.2 Adding a contact

You can add a new contact to phone or SIM card by selecting **"Add contact"**.

6 Call log

6.1 Access

You can access the function using the following options:

- Select from main menu.
- Press the send key from Home screen.
- Select from widget bar, and then enter the sub-menu you require.

6.2 Available options

When you press **"Options"**, you can have access to **View, Send message, Save to Contacts, Edit before call, Add to blacklist, Add to whitelist, Delete**, etc.

7 Facebook.....

Facebook is a social unity that connects people with friends and others who work, study and live around them. It provides a number of features with which users interact, such as Wall, Pokes, etc.

To open an account online, please go to: <http://m.facebook.com/>.

8 Twitter

Twitter is a social networking and microblogging service that has gained notability and popularity worldwide. This feature enables phone users to exchange news updates and ideas with a community in the form of messages or posts. Posts are displayed on the author's profile page and delivered to the author's subscribers or followers.

To open an account online, please go to: <http://m.twitter.com>.

9 Apps ⁽¹⁾

Apps store is an online software store, where you can download and install applications and games to your phone.

10 Apps Mgr

You can manage your downloaded applications and games.

⁽¹⁾ Depending on your network operator.

11 Camera

Your mobile phone is fitted with a camera for taking photos and shooting videos that you can use in different ways:

- store them as your creations in SD card or phone.
- send them in a multimedia message (MMS) to a mobile phone.
- send them directly by MMS, Bluetooth.
- customise your Home screen.
- select them as incoming call image to a contact in your Contacts.
- transfer them by data cable or microSD card to your computer.

12 Music

You can access this feature from the main menu by selecting **"Music"**. You will have full flexibility of managing music both on your mobile and SD card.

13 Images.....

A library links to the images (stored in **"Photos"**) in phone or SD card to multi-mark, set as wallpaper, power on/off display and incoming call image or sent by MMS, Bluetooth.

⁽¹⁾ Depending on your network operator and market.

14 Videos

Contains all video clips (stored in **"Videos"**) in phone or SD card and enables you to play, send, delete, rename, etc.

15 FM radio

Your phone is equipped with a radio ⁽¹⁾ with RDS ⁽²⁾ functionality. You can use the application as a traditional radio with saved channels or with parallel visual information related to the radio program on the display, if you tune to stations that offer Visual Radio service. You can listen to it while running other applications.

16 Recorder

Accessing **Recorder** allows you to make voice or sound recordings.

17 My files

You will have an access to all audio and visual files stored in phone or SD card in **My files**. You can access a number of items with this option: **Answer machine, Audio, MRE, My Music, Photos**, etc.

⁽¹⁾ The quality of the radio depends on the coverage of the radio station in that particular area.

⁽²⁾ Depending on your network operator and market.

18 Games ⁽¹⁾

Enables you to download favorite games to your phone.

19 Alarm

Your mobile phone has a built-in alarm clock with a snooze feature.

20 Calculator

Access this feature by selecting **"Calculator"** from the main menu.

Enter a number, select the type of operation to be performed using the navigation keys, and enter the second number, then select **"="** to display the result.

21 Calendar

Once you enter this menu from main menu, there is a monthly-view calendar for you to keep track of important meetings, appointments, etc. Days with events entered will be marked in color.

⁽¹⁾ You need to download the application to your phone for the first time. May cause additional network charges for data flow to download this application.

22 Notes.....

You can create a note in text format by accessing **"Notes"** from the main menu.

23 Bluetooth™

You can transfer data, such as music to other device using Bluetooth. Search the device and accept/transfer data. The received data is automatically stored in the directory.

24 Converter

This function enables you to do conversion of weight and length and so on.

25 Voice alarm

With this menu, you can create the voice file and set it as the alarm.

26 Fake call

This program enables you to call yourself by simulating a caller number/name, ringtone at a scheduled time. It helps you to politely escape from social situations at any time you wish. This call can be rejected by key . Activate a fake call by **"Fake call model Enable"**.

27 Call filter.....

Enable blacklist, all callers in the list will be automatically blocked. Enable whitelist, only callers in the list can be connected.

28 Torch

Long press 5 to open the flashlight function.

29 Internet.....

Access Wap options: **Homepage, Bookmarks, Search or input URL, Last wap address, Recent pages, Stored pages, Settings**.

⁽¹⁾ Make the phone's settings recover to its default value. End-user data will not be erased. Enter its default password 0000 to confirm to restore and reboot.

30 Opera Mini

After installed it you can view webpage when you connected with internet.

31 Profiles

With this menu, you may personalise ringtones for different events and environments.

32 Settings

From the main menu, select the menu icon and select the function of your choice in order to customise your telephone: **Phone settings, Call settings, Network, Connectivity, Security, Regulatory&Safety, Rights manager, Restore default** ⁽¹⁾, etc.

⁽¹⁾ Make the phone's settings recover to its default value. End-user data will not be erased. Enter its default password 0000 to confirm to restore and reboot.

33 Services.....

Contact your network operator to check service availability.

34 Input mode

This mode allows you to type a text by choosing a letter or sequence of characters associated with a key. Press the key several times until the desired letter is highlighted. When you release the key the highlight character is inserted into the text.

ALCATEL is a trademark of Alcatel-Lucent and is used under license by TCL Communication Ltd.

All rights reserved © Copyright 2015
TCL Communication Ltd.

TCL Communication Ltd. reserves the right to alter material or technical specification without prior notice.

Safety and use

We recommend that you read this chapter carefully before using your phone. The manufacturer disclaims any liability for damage, which may result as a consequence of improper use or use contrary to the instructions contained herein.

- **TRAFFIC SAFETY:**
Given that studies show that using a mobile phone while driving a vehicle constitutes a real risk, even when the hands-free kit is used (car kit, headset...), drivers are requested to refrain from using their mobile when the vehicle is not parked.

When driving, do not use your phone and headphone to listen to music or to the radio. Using a headphone can be dangerous and forbidden in some areas.

When switched on, your phone emits electromagnetic waves that can interfere with the vehicle's electronic systems such as ABS anti-lock brakes or airbags. To ensure that there is no problem:

- do not place your phone on top of the dashboard or within an airbag deployment area,
- check with your car dealer or the car manufacturer to make sure that the dashboard is adequately shielded from mobile phone RF energy.

- **CONDITIONS OF USE:**
You are advised to switch off the telephone from time to time to optimise its performance.

Switch the phone off before boarding an aircraft.

Switch the phone off when you are in health care facilities, except in designated areas. As with many other types of equipment now in regular use, mobile telephones can interfere with other electrical or electronic devices, or equipment using radio frequency.

Switch the phone off when you are near gas or flammable liquids. Strictly obey all signs and instructions posted in a fuel depot, petrol station, or chemical plant, or in any potentially explosive atmosphere.

When the phone is switched on, it should be kept at least 15 cm from any medical device such as a pacemaker, a hearing aid or insulin pump, etc. In particular when using the phone, you should hold it against the ear on the opposite side to the device, if any.

To avoid hearing impairment, pick up the call before holding your phone to your ear. Also move the handset away from your ear while using the "hands-free" mode because the amplified volume might cause hearing damage.

Do not let children use the phone and/or play with the telephone and accessories without supervision.

Do not attempt to disassemble your phone. If you disassemble your phone the warranty will not apply. Also disassembling the phone may damage the battery, and may cause leakage of substances that could create an allergic reaction.

Always handle your phone with care and keep it in a clean and dust-free place.

Do not allow your phone to be exposed to adverse weather or environmental conditions (moisture, humidity, rain, infiltration of liquids, dust, sea air, etc). The manufacturer's recommended operating temperature range is -10°C to +45°C.

At over 45°C the legibility of the phone's display may be impaired, though this is temporary and not serious.

Emergency call numbers may not be reachable on all cellular networks. You should never rely only on your phone for emergency calls.

Do not open, dismantle or attempt to repair your mobile phone yourself.

Do not drop, throw or bend your mobile phone.

Do not use the phone if the glass made screen, is damaged, cracked or broken to avoid any injury.

Do not paint it.

Use only batteries, battery chargers, and accessories which are recommended by TCL Communication Ltd. and its affiliates and are compatible with your phone model. TCL Communication Ltd. and its affiliates disclaim any liability for damage caused by the use of other chargers or batteries.

Remember to make back-up copies or keep a written record of all important information stored in your phone.

Some people may suffer epileptic seizures or blackouts when exposed to flashing lights, or when playing video games. These seizures or blackouts may occur even if a person never had a previous seizure or blackout. If you have experienced seizures or blackouts, or if you have a family history of such occurrences, please consult your doctor before playing video games on your phone or enabling a flashing-lights feature on your phone.

Parents should monitor their children's use of video games or other features that incorporate flashing lights on the phones. All persons should discontinue use and consult a doctor if any of the following symptoms occur: convulsion, eye or muscle twitching, loss of awareness, involuntary movements, or disorientation. To limit the likelihood of such symptoms, please take the following safety precautions:

- Do not play or use a flashing-lights feature if you are tired or need sleep.
- Take a minimum of a 15-minute break hourly.
- Play in a room in which all lights are on.
- Play at the farthest distance possible from the screen.
- If your hands, wrists, or arms become tired or sore while playing, stop and rest for several hours before playing again.
- If you continue to have sore hands, wrists, or arms during or after playing, stop the game and see a doctor.

When you play games on your phone, you may experience occasional discomfort in your hands, arms, shoulders, neck, or other parts of your body. Follow the instructions to avoid problems such as tendinitis, carpal tunnel syndrome, or other musculoskeletal disorders.



PROTECT YOUR HEARING

To prevent possible hearing damage, do not listen at high volume levels for long periods. Exercise caution when holding your device near your ear while the loudspeaker is in use.

- **PRIVACY:**

Please note that you must respect the laws and regulations in force in your jurisdiction or other jurisdiction(s) where you will use your mobile phone regarding taking photographs and recording sounds with your mobile telephone. Pursuant to such laws and regulations, it may be strictly forbidden to take photographs and/or to record the voices of other people or any of their personal attributes, and duplicate or distribute them, as this may be considered to be an invasion of privacy. It is the user's sole responsibility to ensure that prior authorisation be obtained, if necessary, in order to record private or confidential conversations or take a photograph of another person; the manufacturer, the seller or vendor of your mobile phone (including the operator) disclaim any liability which may result from the improper use of the mobile phone.

- **BATTERY:**

Before removing the battery from your phone, please make sure that the phone is switched off.

Observe the following precautions for battery use:

- Do not attempt to open the battery (due to the risk of toxic fumes and burns).
- Do not puncture, disassemble or cause a short-circuit in a battery.
- Do not burn or dispose of a used battery in household rubbish or store it at temperatures above 60°C.

Batteries must be disposed of in accordance with locally applicable environmental regulations. Only use the battery for the purpose for which it was designed. Never use damaged batteries or those not recommended by TCL Communication Ltd. and/or its affiliates.

This symbol on your telephone, the battery and the accessories means that these products must be taken to collection points at the end of their life:

- Municipal waste disposal centres with specific bins for these items of equipment
- Collection bins at points of sale.

They will then be recycled, preventing substances being disposed of in the environment, so that their components can be reused.

In European Union countries:

These collection points are accessible free of charge.

All products with this sign must be brought to these collection points.

In non European Union jurisdictions:

Items of equipment with this symbol are not to be thrown into ordinary bins if your jurisdiction or your region has suitable recycling and collection facilities; instead they are to be taken to collection points for them to be recycled.

CAUTION: RISK OF EXPLOSION IF BATTERY IS REPLACED BY AN INCORRECT TYPE. DISPOSE OF USED BATTERIES ACCORDING TO THE INSTRUCTIONS.

- **CHARGERS**

Mains powered chargers will operate within the temperature range of: 0°C to 40°C.

The chargers designed for your mobile phone meet with the standard for safety of information technology equipment and office equipment use. They are also compliant to the ecodesign directive 2009/125/EC. Due to different applicable electrical specifications, a charger you purchased in one jurisdiction may not work in another jurisdiction. They should be used for this purpose only.

- **RADIO WAVES:**

Proof of compliance with international standards (ICNIRP) or with European Directive 1999/5/EC (R&TTE) is required of all mobile phone models before they can be put on the market. The protection of the health and safety for the user and any other person is an essential requirement of these standards or this directive.

THIS DEVICE MEETS INTERNATIONAL GUIDELINES FOR EXPOSURE TO RADIO WAVES

Your mobile device is a radio transmitter and receiver. It is designed not to exceed the limits for exposure to radio waves (radio frequency electromagnetic fields) recommended by international guidelines. The guidelines were developed by an independent scientific organization (ICNIRP) and include a substantial safety margin designed to assure the safety of all persons, regardless of age and health.

The radio wave exposure guidelines use a unit of measurement known as the Specific Absorption Rate, or SAR. The SAR limit for mobile devices is 2 W/kg.

Tests for SAR are conducted using standard operating positions with the device transmitting at its highest certified power level in all tested frequency bands. The highest SAR values under the ICNIRP guidelines for this device model are:

2045X:

| Maximum SAR for this model and conditions under which it was recorded. | | |
|--|-----------|------------|
| Head SAR | WCDMA 900 | 0.806 W/kg |
| Body-worn SAR | GSM 900 | 1.11 W/kg |

- **LICENCES**



microSD Logo is a trademark.



The Bluetooth word mark and logos are owned by the Bluetooth SIG, Inc. and any use of such marks by TCL Communication Ltd. and its affiliates is under license. Other trademarks and trade names are those of their respective owners.

General information

- **Internet address:** www.alcatelonetouch.com
- **Hot Line Number:** see "TCL Communication Services" leaflet or go to our website.

- **Address:** Room 1910-12A, Tower 3, China HK City, 33 Canton Road, Tsimshtsui, Kowloon, Hong Kong
- On our website, you will find our FAQ (Frequently Asked Questions) section. You can also contact us by e-mail to ask any questions you may have.

An electronic version of this user guide is available in English and other languages according to availability on our server:

www.alcatelonetouch.com

Your telephone is a transceiver that operates on GSM 850/900/1800/1900 MHz and UMTS 900/2100MHz.

CEI588

This equipment is in compliance with the essential requirements and other relevant provisions of Directive 1999/5/EC. The entire copy of the Declaration of Conformity for your telephone can be obtained through our website: www.alcatelonetouch.com.

Protection against theft ⁽¹⁾

Your telephone is identified by an IMEI (phone serial number) shown on the packaging label and in the phone's memory. We recommend that you note the number the first time you use your telephone by entering * # 0 6 # and keep it in a safe place. It may be requested by the police or your operator if your telephone is stolen. This number allows your mobile telephone to be blocked preventing a third person from using it, even with a different SIM card.

Disclaimer

There may be certain differences between the user manual description and the phone's operation, depending on the software release of your telephone or specific operator services.

TCL Communication shall not be held legally responsible for such differences, if any, nor for their potential consequences, which responsibility shall be borne by the operator exclusively. This handset may contain materials, including applications and software in executable or source code form, which is submitted by third parties for inclusion in this handset ("Third Party Materials"). All third party materials in this handset are provided "as is", without warranty of any kind, whether express or implied, including the implied warranties of merchantability, fitness for a particular purpose or use/third party application, interoperability with other materials or applications of the purchaser and non-infringement of copyright. The purchaser undertakes that TCL Communication has complied with all quality obligations incumbent upon it as a manufacturer of mobile devices and handsets in complying with Intellectual Property rights. TCL Communication will at no stage be responsible for the inability or failure of the Third Party Materials to operate on this handset or in interaction with any other devices of the purchaser. To the maximum extent permitted by law, TCL Communication disclaims all liability for any claims, demands, suits or actions, and more specifically – but not limited to – tort law actions, under any theory of liability, arising out of the use, by whatever means, or attempts to use, such Third Party Materials. Moreover, the present Third Party Materials, which are provided free of charge by TCL Communication, may be subject to paid updates and upgrades in the future; TCL Communication waives any responsibility regarding such additional costs, which shall be borne exclusively by the purchaser. The availability of the applications may vary depending on the countries and the operators where the handset is used; in no event shall the list of possible applications and software provided with the handsets be considered as an undertaking from TCL Communication; it shall remain merely as information for the purchaser. Therefore, TCL Communication shall not be held responsible for the lack of availability of one or more applications wished for by the purchaser, as its availability depends on the country and the operator of the purchaser. TCL Communication reserves the right at any time to add or remove Third Party Materials from its handsets without prior notice; in no event shall TCL Communication be held responsible by the purchaser for any consequences that such removal may have on the purchaser regarding the use or attempt to use such applications and Third Party Materials.

SIM card PIN locked

- Contact your network operator to obtain the PUK code (Personal Unblocking Key)

I am unable to connect my phone to my computer

- Install ALCATEL ONETOUCH PC suite first of all
- Check that your computer meets the requirements for ALCATEL ONETOUCH PC Suite installation
- Make sure that you're using the right cable from the box

I am unable to download new files

- Make sure there is sufficient phone memory for your download
- Select the microSD card as the location to store downloaded files
- Check your subscription status with your operator

The phone cannot be detected by others via Bluetooth

- Make sure that Bluetooth is turned on and your phone is visible to other users
- Make sure that the two phones are within Bluetooth's detection range

How to make your battery last longer

- Make sure you follow the complete charge time (minimum 3 hours)
- After a partial charge, the battery level indicator may not be exact. Wait for at least 20 minutes after removing the charger to obtain an exact indication
- Switch on the backlight upon request
- Deactivate Bluetooth when not in use

⁽¹⁾ The warranty period may vary depending on your country.

⁽²⁾ The life of a rechargeable mobile phone battery in terms of conversation time standby time, and total service life, will depend on the conditions of use and network configuration. Batteries being considered expendable supplies, the specifications state that you should obtain optimal performance for your phone during the first six months after purchase and for approximately 200 more recharges.

Warranty.....

Your phone is warranted against any defect or malfunctioning which may occur in conditions of normal use during the warranty period of twelve (12) months ⁽¹⁾ from the date of purchase as shown on your original invoice.

Batteries ⁽²⁾ and accessories sold with your phone are also warranted against any defect which may occur during the first six (6) months ⁽³⁾ from the date of purchase as shown on your original invoice.

In case of any defect of your phone which prevents you from normal use thereof, you must immediately inform your vendor or present your phone with your proof of purchase.

If the defect is confirmed, your phone or part thereof will be either replaced or repaired, as appropriate. Repaired phone and accessories are entitled to a one (1) month warranty for the same defect. Repair or replacement may be carried out using reconditioned components offering equivalent functionality.

This warranty covers the cost of parts and labor but excludes any other