



File type	File name	Y560-LXX(UXX) write Phone Info User Guide
General	Version	V1.0
	File code	DKBA0.103.2968
	Preparer	Yi Shirong / 00323517
	Verifier	Jiang Binghua/ 00218025
	Approved by	Gou Zhanguo/ 00148690

Contents

1	Definitions	2
2	Purpose.....	2
3	Scope of application	2
4	Equipment list	2
5	Operating guidelines.....	2
5.1	Installing the test tool	2
6	Applying the LICENSE.....	3
7	Configuring the Write Number	3
8	Starting the Write Number	6
9	Form records.....	9
10	References	9
11	Supplementary instructions.....	9
12	File preparation/revision records.....	9

1 Definitions

These operating instructions are used to write the IMEI Number, WIFI&MAC Address, Bluetooth MAC Address and SN for the mobile phone Y560-LXX(UXX).

2 Purpose

These operating instructions are used to direct operators to write and modify the IMEI/WIFI/BT/SN/MAC addresses and Lock the information to Y560-LXX(UXX).

3 Scope of application

These operating instructions can be used to test the mobile phone Y560-LXX(UXX) under an off-line environment.

4 Equipment list

SN	Name	Specifications
1	PC	CPU Frequency: 2.5G or above; memory: 2G; 32-bit operating system: WinXP, Win7
2	Test tools	Configuration Tool_Stand-alone Converter_Huawei_Sales_Write Number_V1.0.9
3	Mobile phone	Unit to be tested (During the testing, there is need to mount the front cover sub-assembly and fasten the BTB interface for the LCD)
4	Drive	Driver all-in-one
5	USB data cable	General adapter cable for Huawei mobile phones
6	Battery	Special battery for Y560-LXX(UXX)

5 Operating guidelines

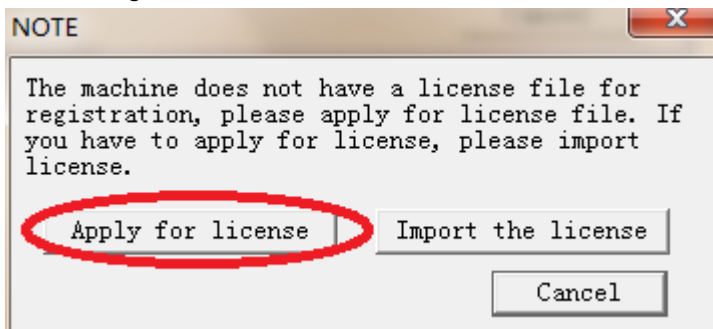
5.1 Installing the test tool

Recall the tool through Compartner or download it through Huawei Technology Knowledge Base

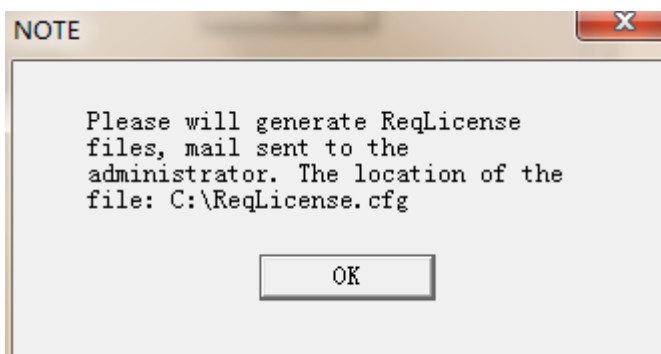
(Configuration Tool_Stand-alone Converter_Huawei_Sales_Write Number_V1.0.9), decompress it to the Local PC.

6 Applying the LICENSE

1) Double-click on HuaweiBinWriteNumber at the directory of the Tools. It will prompt to register the License. If the License has been registered, Write Number will skip this step directly, as shown in the image below:

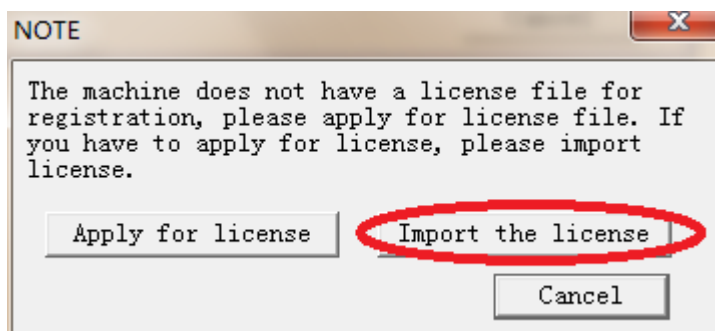


2) Click on Apply for license and a dialog box will pop up below. Click on OK and send the following generated ReqLICENSE file to Huawei's Product Contacts to produce a LICENSE. The file of ReqLICENSE is saved in the disk C, as shown in the image below. (Note: Once a License is imported, it will not prompt to apply for a License when you open the tool at a later date. There is no need to re-apply for a License unless the License expires.)

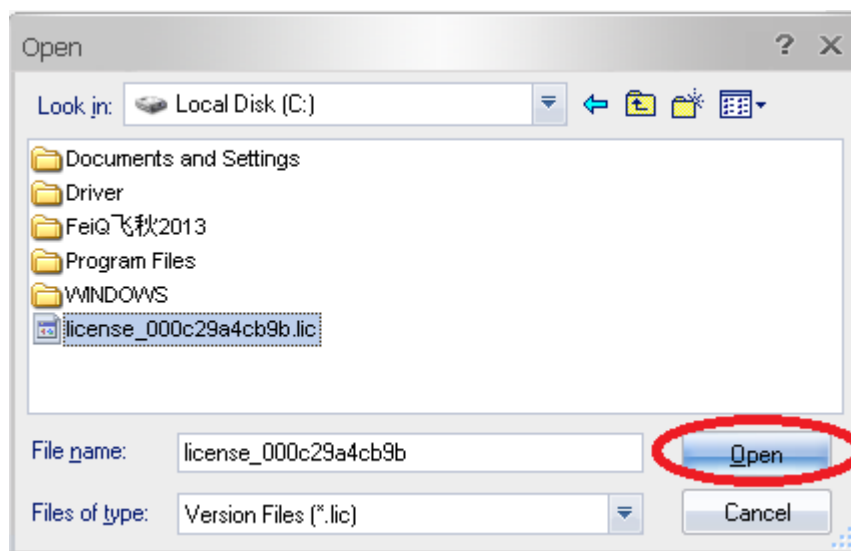


7 Configuring the Write Number

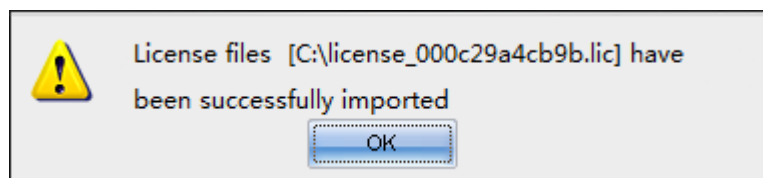
- 1) When the LICENSE produced by Huawei's Product Contacts is received, double-click on HuaweiBinWriteNumber in the directory of the Tools. Click on Import the license when the dialog box below pops up.



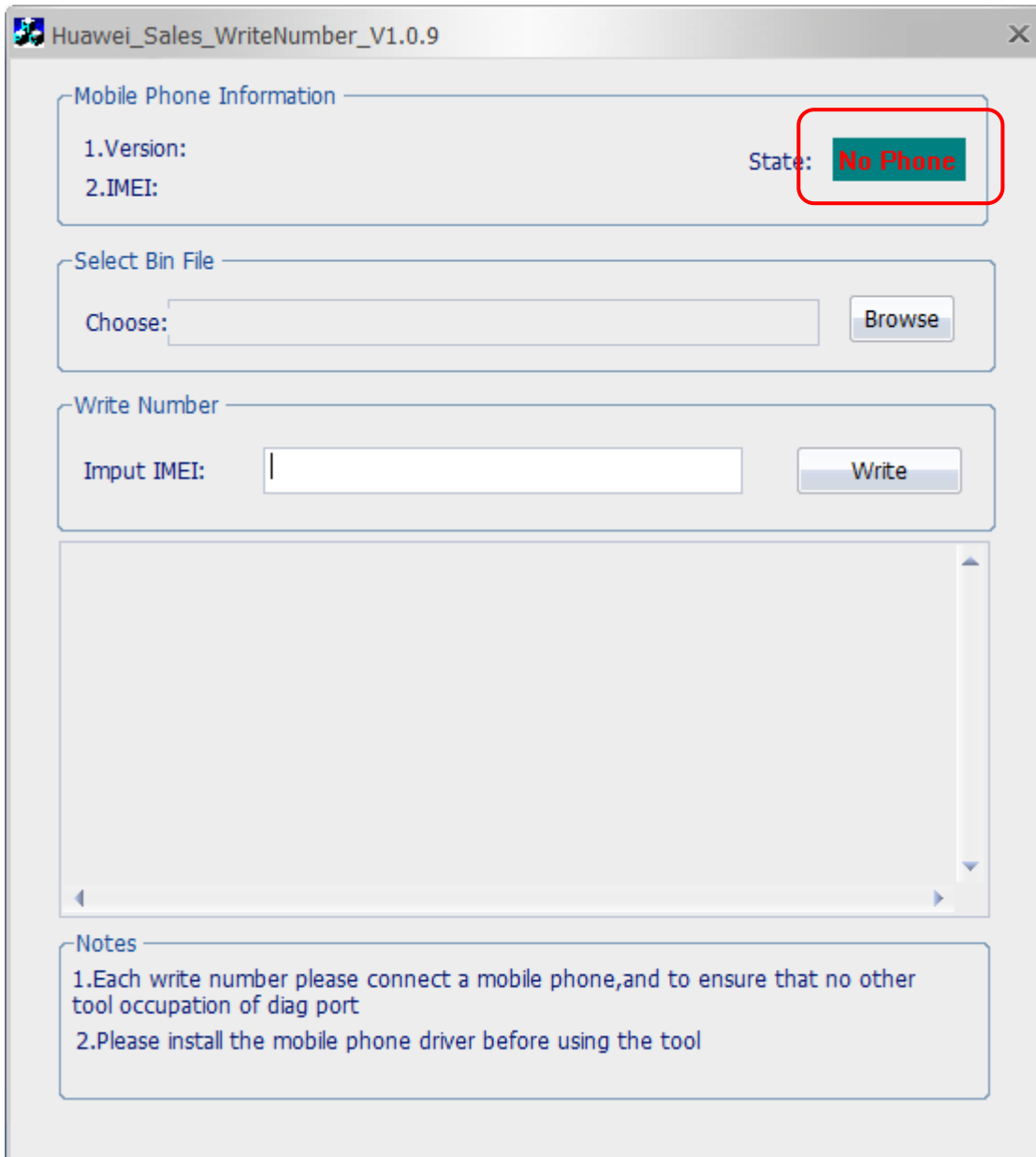
2) To import a LICENSE, double click on the LICENSE selected.



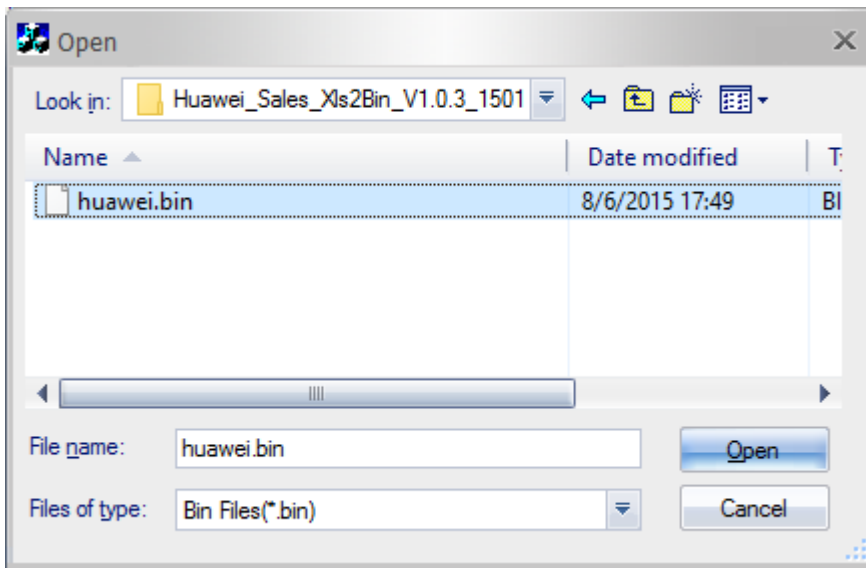
3) After the LICENSE has been successfully imported, click on OK.



4) The inter-face of the Write Number Tool pops up.

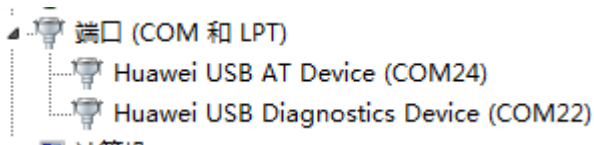


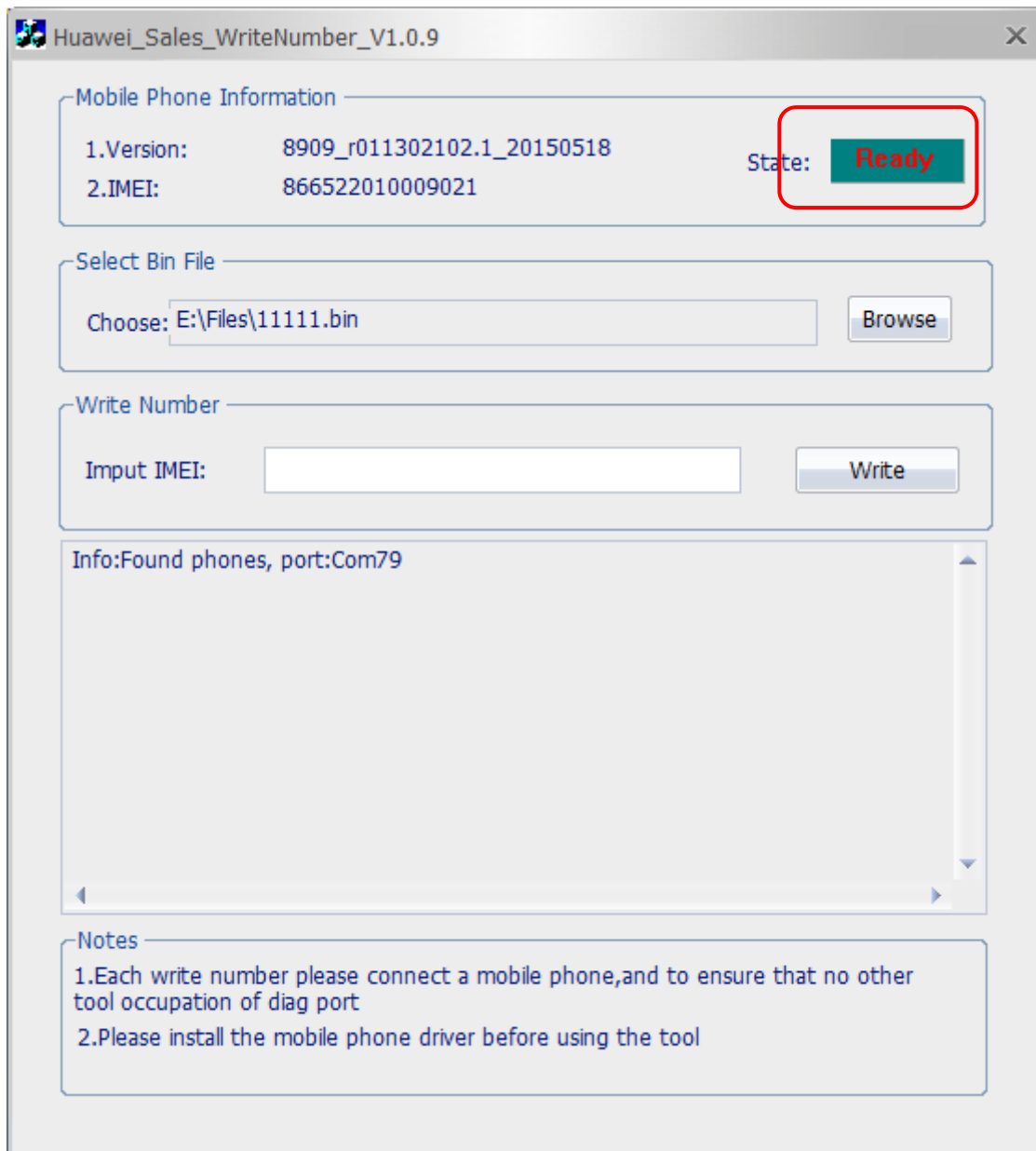
5) Click on Browse, add the encrypted BIN that is produced into the Write Number tool, as shown in the image below.



8 Starting the Write Number

- 1) Boot the mobile phone going to write number and connect it to the PC using a USB data cable. The mobile phone has been connected when the Write Number shows Ready. If it shows No Phone, please check whether the mobile phone's status is normal in the Device Manager. If the status is normal in the Device Manager, an image below will be shown, which means that the driver installation is OK:





2) Enter the IMEI1 in the IMEI box, click on Write. The tool will write in IMEI1, BT, WIFI, IMEI2 to the mobile phone automatically. Of course, if there is no BT, WIFI and Lock values in the BIN file produced, Write Number will not write these into the mobile phone.





9 Form records

Name of form records	Number of form records	Person responsible for retention	Retention place	Retention period	Processing means after expiration

10 References

SN	File name	File code	Filing system
1			

11 Supplementary instructions

12 File preparation/revision records

Version	Preparer	Date of preparation/update	Preparation/updating causes and contents	Approved by
V1.0	Yi Shirong / 00323517	6/26/2015	Newly drafted by	Gou Zhanguo/ 00148690